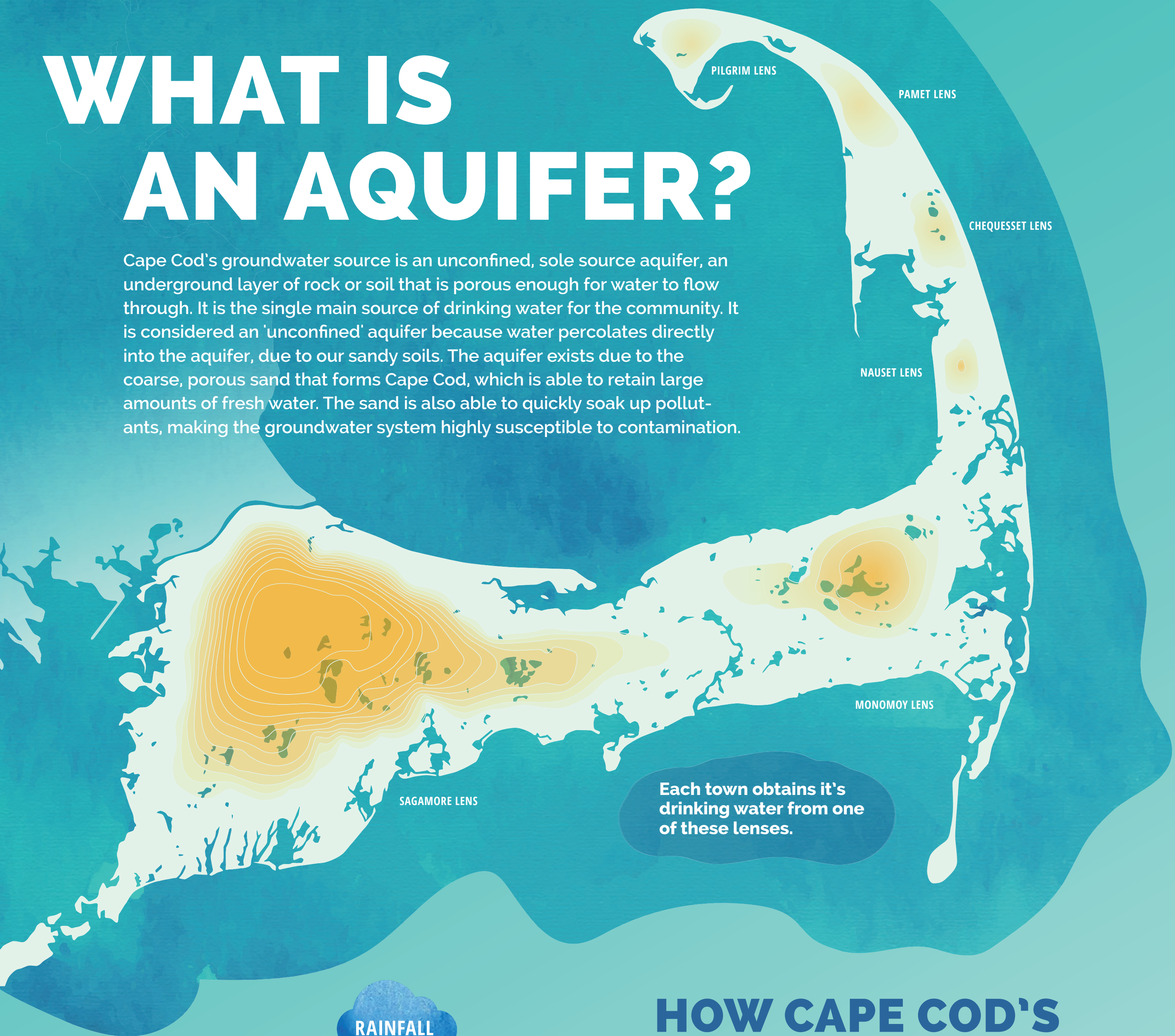


WHAT IS AN AQUIFER?

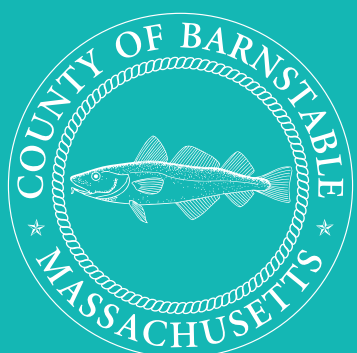
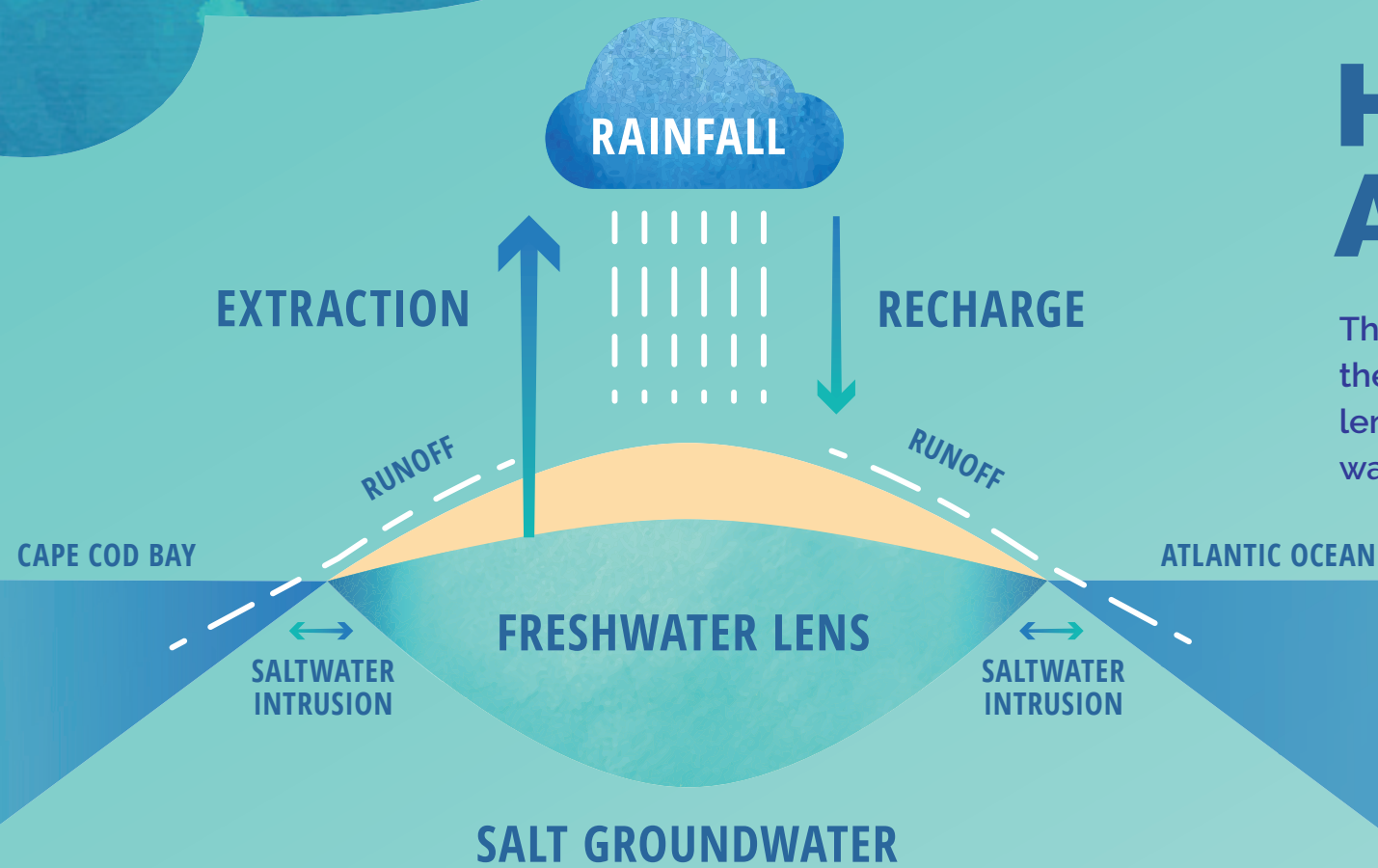
Cape Cod's groundwater source is an unconfined, sole source aquifer, an underground layer of rock or soil that is porous enough for water to flow through. It is the single main source of drinking water for the community. It is considered an 'unconfined' aquifer because water percolates directly into the aquifer, due to our sandy soils. The aquifer exists due to the coarse, porous sand that forms Cape Cod, which is able to retain large amounts of fresh water. The sand is also able to quickly soak up pollutants, making the groundwater system highly susceptible to contamination.



Each town obtains its drinking water from one of these lenses.

HOW CAPE COD'S AQUIFER WORKS

The aquifer is deeper further inland and becomes shallower near the coastal edges, giving it a concave shape that resembles a lens. Because freshwater is less dense than saltwater, the freshwater lens floats above the surrounding saltwater.



CAPE COD
GROUNDWATER GUARDIANS

HELP PROTECT OUR AQUIFER

WWW.CAPECODGROUNDWATER.ORG