

Barnstable County Incident Management Team

Delivering ICS-based Incident Management

MEMA Region II Local Directors Meeting
August 28, 2014





Agenda

- ☐ IMT Overview
- ☐ Barnstable County IMT
- ☐ IMT Deployment Model
- ☐ Deployments
- ☐ The “MACC”
- ☐ IMT Value



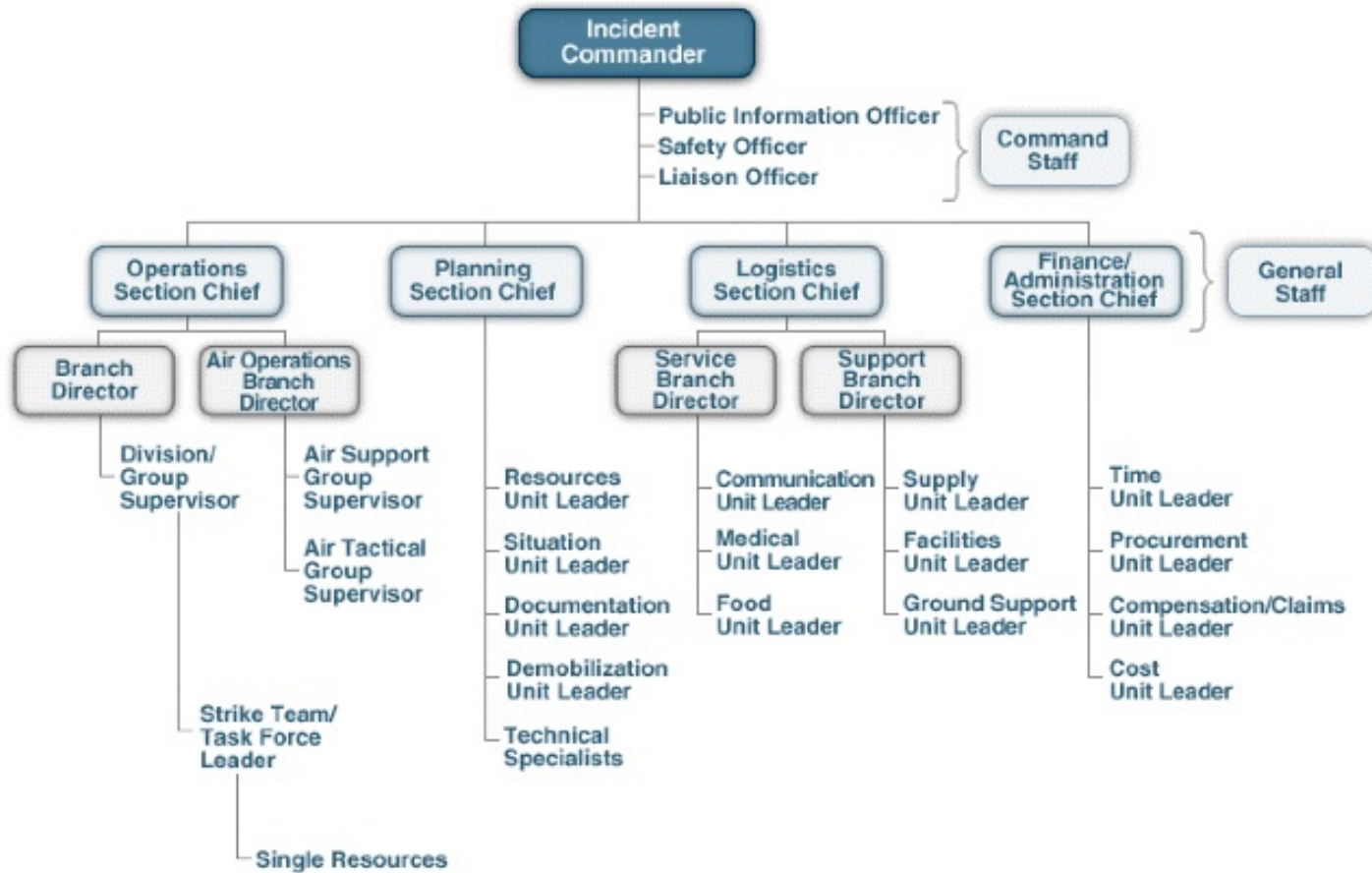
IMT Overview

An All-Hazards Incident Management Team (IMT) --

- A comprehensive National Incident Management System (NIMS) Incident Command System (ICS) resource
- Either augments ongoing operations through provision of infrastructure support or can transition to an incident management function
- Includes all components/functions of a Command and General staff



IMT Command and General Staff





Agenda

- ☐ IMT Overview
- ☒ **Barnstable County IMT**
- ☐ IMT Deployment Model
- ☐ Deployments
- ☐ The “MACC”
- ☐ IMT Value



Barnstable County IMT

- Operates under the authority of the Barnstable County Regional Emergency Planning Committee (REPC)
- Team members – employed and retired – are drawn from both the public and private sectors -- *diversity is key to a successful team*
- Follows FEMA Incident Command and Incident Management standards and uses ICS standard operating procedures within the framework of the National Incident Management System (NIMS)

Leadership

- **Team Leader:** Bob “Buster” Brown, Dennis Fire Department Deputy Chief
- **Assistant Team Leader:** Dan Silverman, Wellfleet Fire Chief (retired)
- **Coordinator:** Mike Walker, Chatham Police Captain (retired)



Team Mission

Provide communities and organizations with All-Hazards IMT services for

Disasters

Emergencies

Planned events





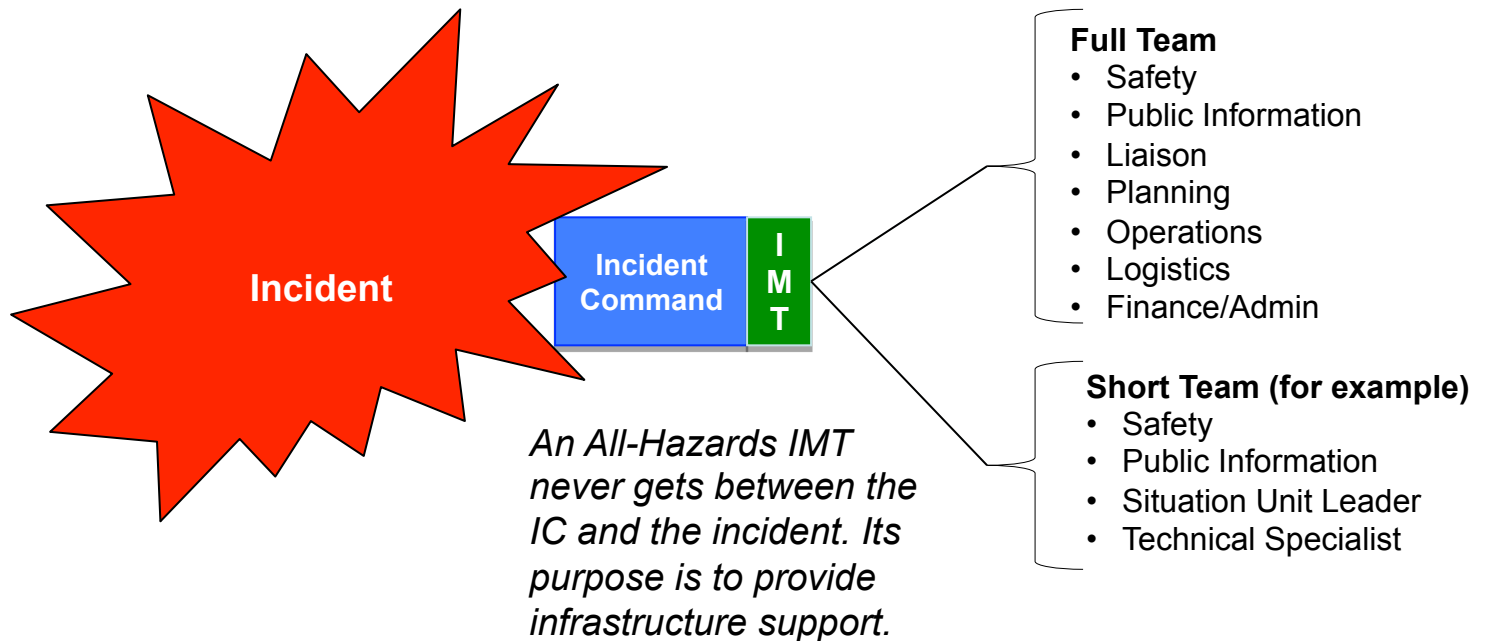
Agenda

- ☐ IMT Overview
- ☐ Barnstable County IMT
- ☒ **IMT Deployment Model**
- ☐ Deployments
- ☐ The “MACC”
- ☐ IMT Value



IMT Deployment Model

The incident grows in duration, size, scope, or complexity and requires additional resources. An IMT is called in...



*It is an Incident **MANAGEMENT** Team...
not an Incident **COMMAND** Team...*



An All-Hazards IMT deploys...

When local resources are challenged by an incident's

Duration

Size and Scope

Complexity





An All-Hazards IMT deploys...

When incidents...

Require technical specialists
or ICS-specific positions

Pose unique response
challenges

Involve the coordination
of multiple agencies



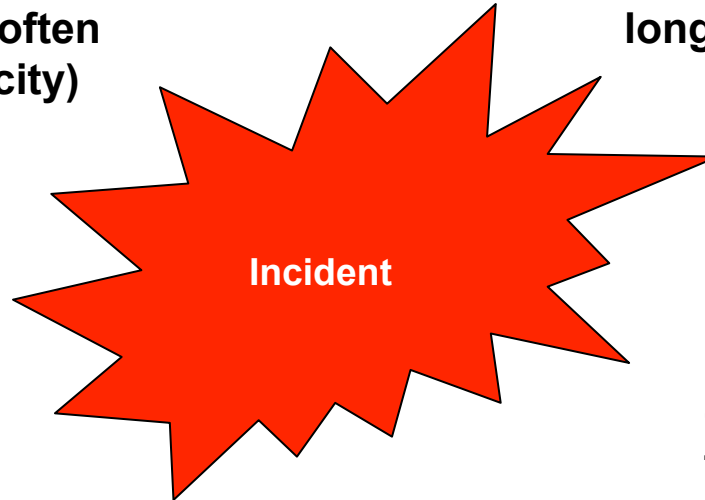


Incident Types

Hazmat spills and environmental disasters

**Hurricanes, ice storms, floods,
or other natural disasters (often
deploying in a MACC capacity)**

**Mass sheltering, pandemics,
long-term police operations**



**Ship, aircraft, or
industrial accidents**

**Large, planned events –
exercises, parades,
festivals, clinics**

Long-term search-and-rescue operations



Flexible Deployment

- Team deployment is not an all-or-nothing proposition
- Every incident or planned event does not require full deployment
- The Team can provide position-specific players as needed for both planned and unplanned incidents – the so-called “short team”



Operational Principles

- The IMT never gets between the IC and the incident
- The IMT will provide infrastructure support to Incident Command or Unified Command
- Overall responsibility for any incident will always remain with the Authority Having Jurisdiction



Agenda

- ☐ IMT Overview
- ☐ Barnstable County IMT
- ☐ IMT Deployment Model
- ☐ **Deployments**
- ☐ The "MACC"
- ☐ IMT Value



BCIMT Deployments - Highlights

2006

- July - Fourth of July Fireworks - Provincetown

2007

- July - Fourth of July Fireworks - Provincetown

2008

- July - Fourth of July Fireworks - Provincetown
- November - EDS - Sandwich

2009

- March - Wildland fire training - Brewster
- June - Sheltering exercise - Regional
- July - Fourth of July Fireworks - Provincetown
- July - Xiarhos funeral - Centerville
- October - EDS - Dennis
- November - Vigilant Guard exercise - NY State
- December - Winter storm - MACC

2010

- March - Wildland fire training - North Truro
- March - Floods - MEMA Framingham, Bridgewater
- May - Water main break - Framingham
- June - Mustard Gas decontamination - New Bedford
- September - Hurricane Earl - MACC*
- November - Operation Patriot Guard - Joint Base Cape Cod

2011

- May - Canal Power Plant Exercise - Sandwich MA
- August - Hurricane Irene - MACC

2012

- January - Airplane crash - Regional
- November - Hurricane Sandy - MACC
- November - Hurricane Sandy, NYC - EMAC deployment

2013

- February - Nor'easter "Nemo" - MACC
- March - Wildland fire training - Joint Base Cape Cod
- June - Tech Rescue Drill - Multi-agency

2014

- January - Nor'easter - MACC
- February - Nor'easter - MACC
- March - Nor'easter - MACC
- April - Fatal industrial accident - Barnstable County TRT**
- May - National Guard Aviation Exercise - Multi-agency
- June - National Guard Aviation Exercise - Multi-agency
- July - Cape Cod Canal Centennial Fireworks - Bourne

**Multi-agency Coordination Center*

***Technical Rescue Team*



Drive-through EDS 2008

November 2008
Sandwich, MA

Nationally recognized drive-through clinic served 1,000 citizens

Handled planning and staffed all six levels of logistical support over a 10-hour operational period

Operated jointly with the MA Fire Marshal, National Guard, and county resources





Hurricane Sandy Relief 2012

November 2012
New York City

In November 2012 team members traveled to New York City on an EMAC deployment to assist in relief activities after Hurricane Sandy devastated many coastal communities.





February 2013 Blizzard “Nemo”

February 2013
Multi-Agency Coordination Center
(MACC)
Joint Base Cape Cod

The BCIMT stood up and managed the Barnstable County MACC in cooperation with civilian and military resources for multiple operational periods.





Agenda

- ☐ IMT Overview
- ☐ Barnstable County IMT
- ☐ IMT Deployment Model
- ☐ Deployments
- ☐ **The “MACC”**
- ☐ IMT Value



What is the MACC?

Multi-Agency Coordination Center

Designed to aid jurisdictions who require assistance during and after large-scale regional incidents...

- Standard NIMS entity
- Operated and managed by the BC IMT
- Coordinates regional resource acquisition and shares information
- Submits requests for state and federal assistance through the Massachusetts Emergency Management Agency (MEMA) when regional resources are unavailable or exhausted

The key is coordination and...



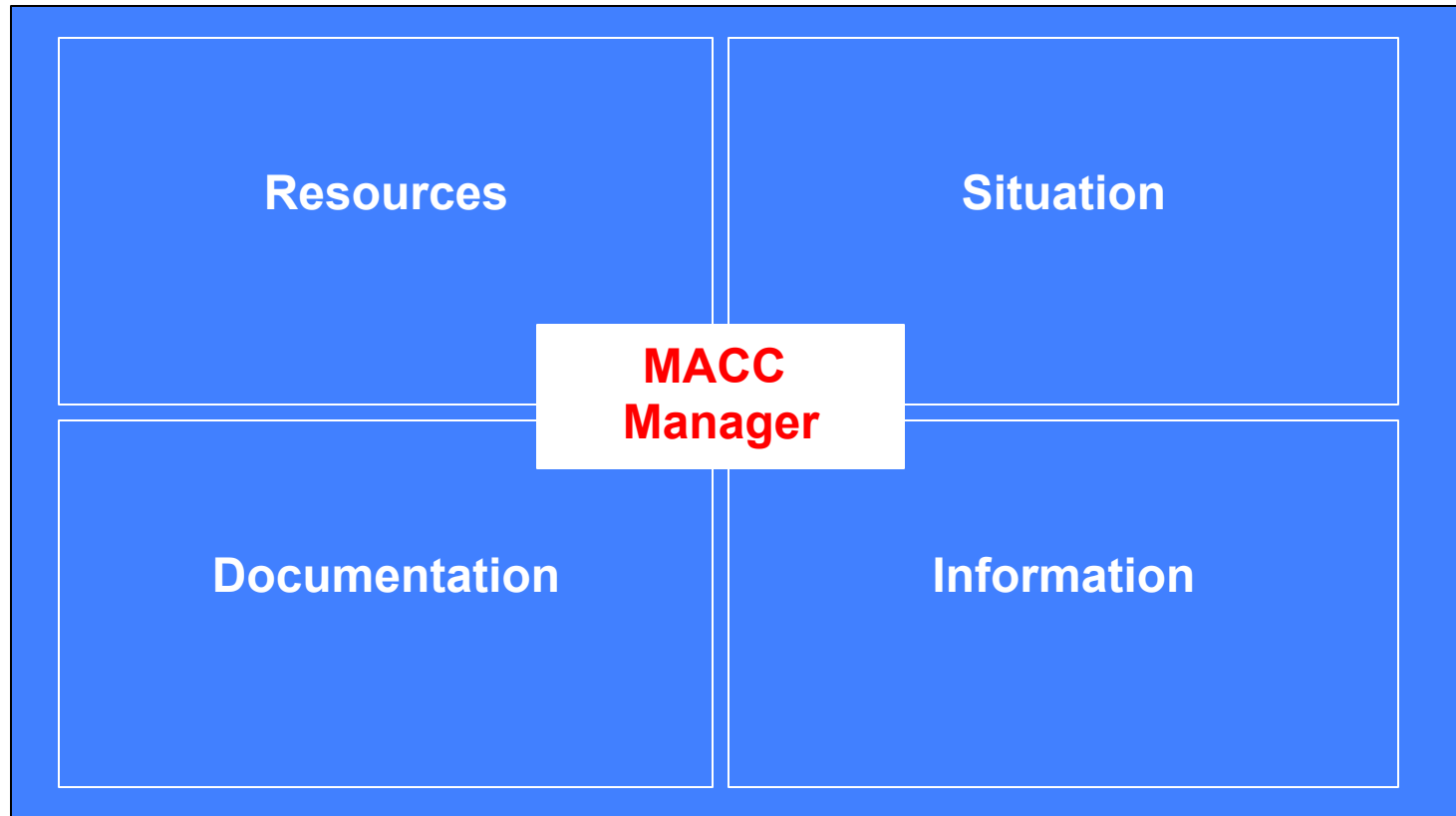
...working relationships

The MACC works with the following entities directly and indirectly:

- Town EOCs
- Neighboring County EOCs – Plymouth, Dukes and Nantucket
- Private organizations and agencies
 - Utilities, healthcare facilities, regional transit authority, Red Cross, and other NGOs*
- MEMA



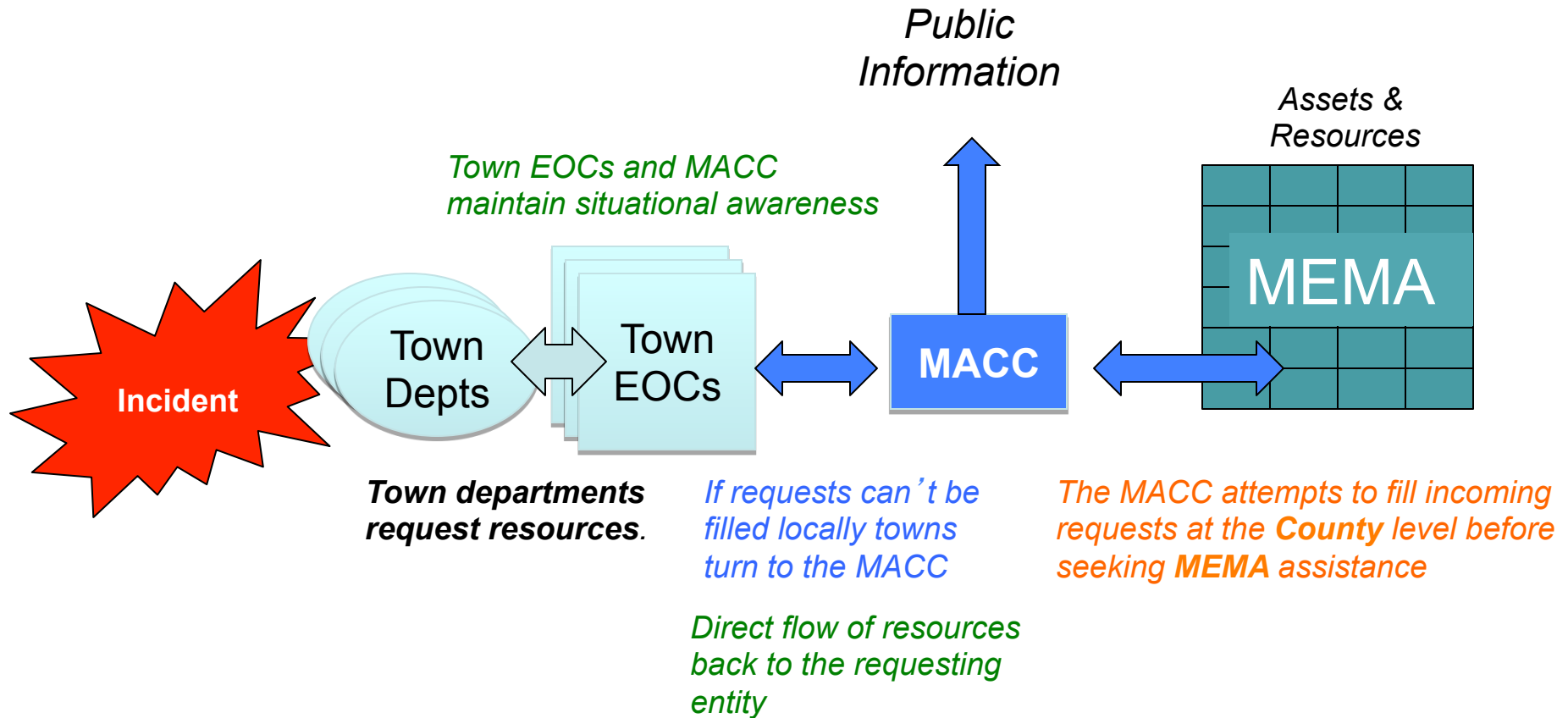
MACC Functions





MACC

Information & Resources Flow





Agenda

- ☐ IMT Overview
- ☐ Barnstable County IMT
- ☐ IMT Deployment Model
- ☐ Deployments
- ☐ The “MACC”
- ☐ **IMT Value**



2013 Tetra Tech Report

In 2012, MEMA hired Tetra Tech to develop its Statewide All-Hazards Incident Management Team (IMT) Strategy.

Tetra Tech conducted research on how other states have developed--or are developing--All-Hazards IMTs. In addition, Tetra Tech and MEMA conducted a facilitated discussion on the issues raised in the report and incorporated stakeholder input.

The study, released in 2013, presented key findings, provided points of discussion, and shared some broad best practices.

The next three slides highlight some key points.



Dispelling Myths

“A coordinated outreach program must be developed to share the mission and purpose of the All-Hazards IMTs. ***The outreach campaign needs to dispel any myths related to All-Hazards IMTs taking over control of an incident being managed at the local level...***”



Supporting Localities

“Key messages and themes must clarify that local government retains authority over policy decisions and that ***All-Hazards IMTs are to provide support to these local officials*** as they address the consequences of the disaster.”



Necessary Resources

“...the outreach campaign must help the key decision makers, appointed city or town managers, and elected officials to understand the ways in which an ***All-Hazards IMT can help control costs, develop response and recovery actions and priorities, and provide necessary documentation for cost recovery***...Reaching the appropriate individuals...will ensure the ***teams are viewed as one of the necessary resources for effective disaster response.***”



For More Information

BCREPC.org

Home | **Prepare** | **Sheltering** | **Volunteering** | **BC IMT** | **Hazard Reporting** | **About** | **Calendar** | **BC Health & Env**

Sheltering

From hurricanes to blizzards to nor'easters, the Barnstable County is vulnerable to large, destructive storms in any season. These storms can disrupt our daily lives with the loss of power, transportation, commerce, communications, and even housing. When these major disruptions occur you can leave the area to seek shelter in an unaffected region of the state [...]

Sandwich High School
365 Quaker Meetinghouse Road
Sandwich

Map Labels: Sagamore, Buzzards Bay, Pocasset, Mashpee, East Falmouth, Falmouth, Sandy Neck, Barnstable, Hyannis, Osterville, Dennis, South Dennis, Harwich, Chatham, Orleans, Eastham, Cape Cod, Wellfleet Harbor, Monomoy National Wildlife Refuge.

E-mail: bcimt@barnstablecounty.org

Follow us on Twitter [@bcrepc](https://twitter.com/bcrepc)